

PRIORITY SERVICE PLAN FY 2018

October 1, 2017 - September 30, 2018

DISABILITY RIGHTS MONTANA
PROTECTS AND ADVOCATES FOR THE
HUMAN, LEGAL, AND CIVIL RIGHTS OF MONTANANS
WITH DISABILITIES WHILE ADVANCING
DIGNITY, EQUALITY, AND SELF-DETERMINATION.

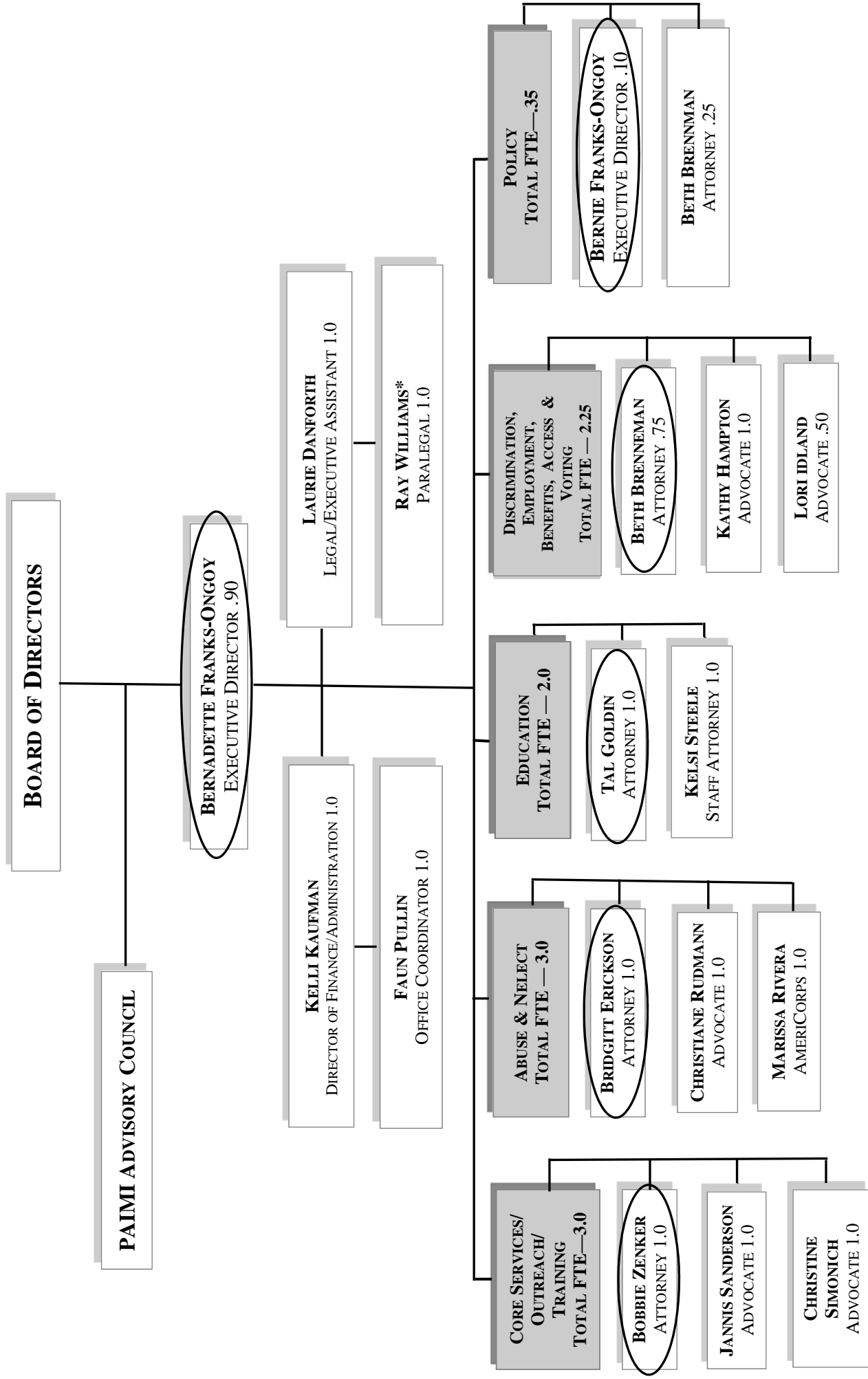
PRIORITY SERVICE PLAN FY 2018

October 1, 2017 - September 30, 2018

TABLE OF CONTENTS

Organizational Chart	iii
Work Group Hours Allocation	iv
Priority Areas	v
Core Services	1
Abuse & Neglect	2
Discrimination, Employment, Benefits, Access, and Voting	4
Education	8
Outreach/Training	10
Policy	11
Civil Rights	12
Service Request Form	vii
DRM Staff/Board of Directors Calendar	ix

DISABILITY RIGHTS MONTANA ORGANIZATIONAL/SUPERVISORY CHART



*Position supervised by the Attorney Work Unit; primarily Bobbie

WORK GROUP HOURS ALLOCATION (FY2018)

CORE SERVICES/OUTREACH										
	PAAT	CAP	PAIR	PADD	PAIMI	PABSS	PATBI	PAVA	Total Hrs.	FTE
JS	104	72	312	416	812	104	52	208	2,080	1.000
CS	104	72	312	416	812	104	52	208	2,080	1.000
BZ	52	72	260	312	468	344	52	520	2,080	1.000
Total	260	216	884	1,144	2,092	552	156	936	6,240	3.000

ABUSE & NEGLECT							
	PAIR	PADD	PAIMI	PATBI	PAVA	Total Hrs.	FTE
BE	208	776	836	104	156	2,080	1.000
CR	52	1,560	208	52	208	2,080	1.000
MR	208	204	1408	52	208	2,080	1.000
Total	468	2,540	2,452	208	572	6,240	3.000

EDUCATION										
	PAAT	CAP	PAIR	PADD	PAIMI	PABSS	PATBI	PAVA	Total Hrs.	FTE
TG	136	72	264	804	622	26	104	52	2,080	1.000
KS	208	72	264	804	550	26	104	52	2,080	1.000
Total	344	144	528	1,608	1,172	52	208	104	4,160	2.000

DISCRIMINATION, EMPLOYMENT, BENEFITS, ACCESS, & VOTING										
	PAAT	CAP	PAIR	PADD	PAIMI	PABSS	PAVA	Total Hrs.	FTE	
BB	338	286	234	52	130	312	208	1,560	0.750	
KH	0	1,040	0	0	0	832	104	1,976	0.950	
LI	26	52	104	26	26	754	52	1,040	0.500	
Total	364	1,378	338	78	156	1,898	364	4,576	2.200	

POLICY						
	PAIR	PADD	PAIMI	PATBI	Total Hrs.	FTE
BB	338	52	78	52	520	0.250
BFO	52	65	65	26	208	0.100
Total	390	117	143	78	728	0.350

LEGAL PROGRAM SUPPORT										
	PAAT	CAP	PAIR	PADD	PAIMI	PABSS	PATBI	PAVA	Total Hrs.	FTE
LD	72	65	156	275	275	36	36	125	1,040	0.500
RW	104	72	312	520	876	72	72	52	2,080	1.000
Total	176	137	468	795	1,151	108	108	177	3,120	1.500

ADMINISTRATION										
	PAAT	CAP	PAIR	PADD	PAIMI	PABSS	PATBI	PAVA	Total Hrs.	FTE
BFO	104	171	205	484	455	238	36	178	1,872	0.900
KK	104	171	257	549	520	238	62	178	2,080	1.000
KH	5	9	13	27	26	12	3	9	104	0.050
FP	104	171	257	549	520	238	62	178	2,080	1.000
LD	52	86	129	275	260	119	31	89	1,040	0.500
Total	371	608	861	1,884	1,781	846	194	631	7,176	3.450

Grant	Total FTE
PAAT	0.73
CAP	1.19
PAIR	1.89
PADD	3.93
PAIMI	4.30
PABSS	1.66
PATBI	0.46
PAVA	1.34
TOTAL FTE	15.50

Grant	% FTE
PAAT	4.70%
CAP	7.70%
PAIR	12.21%
PADD	25.33%
PAIMI	27.75%
PABSS	10.72%
PATBI	2.95%
PAVA	8.64%
TOTAL	100.00%

Grant	Total Hrs.
PAAT	1,515
CAP	2,483
PAIR	3,937
PADD	8,166
PAIMI	8,947
PABSS	3,456
PATBI	952
PAVA	2,784
TOTAL HRS	32,240

Grant	% Funds
PAAT	3.61%
CAP	9.52%
PAIR	12.38%
PADD	27.75%
PAIMI	30.88%
PABSS	7.21%
PATBI	3.61%
PAVA	5.05%
TOTAL	100.00%

Disability Rights Montana has established the following priorities to achieve freedom from discrimination for people with disabilities.

Following is a description of the priority areas, the rationale, and the work to be accomplished:

CORE SERVICES

Disability Rights Montana is required to provide information on and referral to people with disabilities and the public inquiring about services, programs, and the civil rights of people with disabilities. Timely and accurate information and referral services will be provided to every person that contacts Disability Rights Montana.

People with disabilities experience difficulty in accessing and participating in the voting process. Disability Rights Montana will work with the people with disabilities, Clerks and Recorders, and the Secretary of State to identify barriers to voting and to develop and implement strategies to remove those barriers. Strategies will include surveying polling places for physical accessibility, training on disability awareness and etiquette, and accessible voting methods and technology.

ABUSE & NEGLECT

Disability Rights Montana will work to protect from abuse and neglect all adults and children who are living in congregate living facilities such as residential care facilities, mental health facilities, and developmental disability facilities. Disability Rights Montana will review all reports of serious incidents, including abuse, neglect, death, seclusion, restraint (physical, mechanical, and chemical), and rights violations. Disability Rights Montana will assure proper investigations to identify system-wide failures and pursue legal strategies that target systemic change to assure safe, humane, and appropriate services and the least restrictive living environments.

DISCRIMINATION, EMPLOYMENT, BENEFITS, AND ACCESS (DEBA)

People with disabilities who want to work will have access to rehabilitation services and benefits. Disability Rights Montana will: 1) provide technical assistance to people with disabilities seeking reasonable accommodations to maintain their employment; and 2) represent people who experience difficulty accessing vocational rehabilitation services, independent living services, and other services funded under the Rehabilitation Act.

People with disabilities often experience difficulty in physical and program access to public and government facilities and programs. Disability Rights Montana will continue its county services access monitoring project to assure people with disabilities can physically enter and access government services located in county courthouses and buildings.

People with disabilities often experience difficulty in their return to work efforts. Disability Rights Montana will ensure that Social Security Beneficiaries (SSB) are supported in their return to work efforts by providing accurate information or available work incentives and providing advocacy and legal representation when their rights are violated.

EDUCATION

Every student deserves the opportunity to succeed. Disability Rights Montana receives calls nearly every day from families of people with disabilities requesting assistance regarding education services, particularly in public elementary and secondary schools. Specific learning disabilities and speech-language impairments continue to represent the largest proportion among those disabilities identified under the special education laws. It is our belief that these disabilities, along with autism spectrum disorders and emotional disturbance, continue to be inadequately addressed in schools, although significant shortfalls exist across all disability categories. With the increased diagnoses of autism spectrum disorders and Montana's growing population of school aged children, Disability Rights Montana expects the number of students receiving special education services to continue to grow. Through collaboration, advocacy, and litigation Disability Rights Montana will protect the rights of students with disabilities to access educational programs, services, activities, and benefits free from discrimination on the basis of disability and to receive a free and appropriate public education.

OUTREACH AND TRAINING

In order to fully participate, exercise choice and self-determination, people with disabilities and the general public can benefit from disability rights and awareness training. Disability Rights Montana will sponsor disability rights and awareness training throughout the state with an emphasis on minority, under-served communities. Disability Rights Montana will produce and distribute an electronic newsletter quarterly and enhance its electronic presence.

POLICY

Disability Rights Montana pursues policy work to preserve the gains made through individual advocacy and to address and correct system issues. Disability Rights Montana will monitor: 1) Monitor and participate in law, policy, and rule changes affecting the rights and opportunities of people with disabilities, and affecting the ability of DRM to serve people with disabilities; and 2) Educate law and policy makers through oral and written communications in legislative and executive branch forums.

CORE SERVICES

1. PRIORITY/GOAL STATEMENT: Disability Rights Montana will provide information, referral, and short-term assistance. DRM will develop and provide resource materials to people with disabilities, and assist people with disabilities to register to vote.

Objective 1:	Provide reliable, timely information and referral services to all callers.	
	Target Population:	People calling Disability Rights Montana for information and referral
	Target:	100% of all callers (200 PAIMI)
	Funding Source:	*Eight Core Grants
Objective 2:	Provide short-term assistance for non-priority issues to eligible persons with disabilities.	
	Target Population:	People with disabilities requesting assistance with non-priority issues
	Target:	35 service requests (20 PAIMI)
	Funding Source:	PAIMI/PAAT/PAIR/PADD/PATBI/PAVA
2. PRIORITY/GOAL STATEMENT: Disability Rights Montana will promote independent and private voting for people with disabilities, through education and training activities.		
Objective 3:	Provide and sponsor voter education and registration events for people with disabilities throughout Montana.	
	Target Population:	People with disabilities and the general public
	Target:	People with disabilities
	Funding Source:	PAVA
* Eight Core Grants = PADD, PAIMI, PAIR, CAP, PAAT, PATBI, PABSS, PAVA		
Objective 4:	Work with Secretary of State, Clerks and Recordors, election officials, disability community, and the general public to ensure that people with disabilities have equal access to the voting process.	
	Target Population:	People with disabilities who vote or seek to vote
	Target:	1 project
	Funding Source:	PAVA

ABUSE & NEGLECT

1. PRIORITY/GOAL STATEMENT: Disability Rights Montana will protect people with disabilities in facilities from abuse, neglect, seclusion/restraint, violations of civil rights and protect their right to receive appropriate services with privacy, dignity, and autonomy.

Objective 1: Identify and monitor all instances of abuse, neglect, seclusion, restraint (+chemical restraint), and violation of civil rights, affecting people with mental illness receiving services and pursue legal remedies. Identify systemic issues to effect change in practice, policy, rule or law.

Target Population:	PAIMI-eligible youth and adults living in or receiving treatment from public and private institutions and facilities (MSH, MMHNCC, YGBR, Shodair, Acadia)
Target:	Review 100% of allegations
Funding Source:	PAIMI

Objective 2: Identify and monitor all instances of abuse/neglect, seclusion, restraint (+chemical restraint), and violation of civil rights at the Montana Developmental Center (MDC) and pursue legal remedies. Identify systemic issues to effect change in practice, policy, rule or law.

Target Population:	All residents at MDC
Target:	Review 100% of allegations
Funding Source:	PADD/PATBI

2. PRIORITY/GOAL STATEMENT: Disability Rights Montana will protect people with disabilities living in community settings from abuse and neglect, violation of civil rights, and protect their right to receive appropriate services in the least restrictive environment.

Objective 3: Monitor DD community services, investigate, advocate, and bring legal action when appropriate to protect the rights of people living in community services.

Target Population:	People with disabilities living in community services
Target:	All PADD eligible persons seeking community living placement options and services.
Funding Source:	PADD/PATBI

3. PRIORITY/GOAL STATEMENT: Disability Rights Montana will protect people with disabilities right to be discharged and transitioned from institutions to community services with appropriate supports.

Objective 4:	Monitor, investigate, advocate, and bring legal action when appropriate when a person from Montana State Hospital (MSH) is not discharged appropriately and timely.	
	Target Population:	Patients at MSH who are ready for discharge
	Target:	25 Service Requests / 1 Project
	Funding Source:	PAIMI
Objective 5:	Monitor the transition for all residents from the Montana Developmental Center (MDC) to community services.	
	Target Population:	MDC residents
	Target:	25 Service Requests / 1 Project
	Funding Source:	PADD, PAIMI, PATBI

DISCRIMINATION, EMPLOYMENT, BENEFITS,
AND ACCESS (DEBA)

1. PRIORITY/GOAL STATEMENT: Disability Rights Montana will promote independent living, meaningful employment, and access to governmental services and programs and public accommodations, for people with disabilities.

Objective 1:	Review cases, provide short-term assistance, technical assistance, and represent individuals who have been discriminated against on the basis of disability or denied reasonable accommodations by employers, using such individualized strategies as filing administrative complaints, lawsuits, and appeals.	
	Target Population:	People with disabilities who are employed or seeking employment
	Target:	30 service requests (5 PAIMI)
	Funding Source:	PAIR/CAP/PAAT/PATBI/PAIMI/PADD
Objective 2:	Review cases, provide technical assistance, and represent individuals who have been denied or have been prohibited from using assistive technology or auxiliary aids by various entities including Medicaid, Medicare, governmental entities, public accommodations or other entities, using such individualized strategies as filing administrative complaints, lawsuits, and appeals.	
	Target Population:	People with disabilities who use or would like to use assistive technology or auxiliary aids.
	Target:	5 service requests
	Funding Source:	PAAT/PAIR

2. PRIORITY/GOAL STATEMENT: Ensure that people with disabilities receive appropriate services from Montana Vocational Rehabilitation, Independent Living Centers, and other programs funded by the Rehabilitation Act.		
Objective 3:	Represent qualified individuals in accordance with the Client Assistance Program (CAP) program requirements to include applicants and clients of the State Vocational Rehabilitation Program.	
	Target Population:	People with disabilities receiving or seeking services from Vocational Rehabilitation and other programs funded by the Rehabilitation Act
	Target:	60 service requests
	Funding Source:	CAP
Objective 4:	Address institutional concerns and issues with the delivery of services by the State Vocational Rehabilitation Program through periodic communication with the Chief of Field Services for Montana Vocational Rehabilitation and participation on the State Vocational Rehabilitation Program.	
	Target Population:	People with disabilities receiving or seeking services from Vocational Rehabilitation and other programs funded by the Rehabilitation Act
	Target:	2 projects
	Funding Source:	CAP
Objective 5:	Participate in training, outreach, and communication to address services to under-served populations including American Indians and individuals age 14 - 24.	
	Target Population:	People with disabilities receiving or seeking services from Vocational Rehabilitation and other programs funded by the Rehabilitation Act
	Target:	2 projects
	Funding Source:	CAP

3. PRIORITY/GOAL STATEMENT: Challenge discrimination on the part of government entities, and ensure that people with disabilities enjoy equal access to all governmental benefits and services.							
Objective 6:	Review cases, provide technical assistance, and represent individuals who have been denied meaningful access to benefits or services or otherwise discriminated against on the basis of disability by governmental entities, using such individualized strategies as filing administrative complaints, lawsuits, and appeals.						
	<table border="1"> <tr> <td>Target Population:</td> <td>People with disabilities who are using or seeking access to government benefits or services</td> </tr> <tr> <td>Target:</td> <td>10 service requests</td> </tr> <tr> <td>Funding Source:</td> <td>PAIR/PAAT/PAVA/PADD/PATBI</td> </tr> </table>	Target Population:	People with disabilities who are using or seeking access to government benefits or services	Target:	10 service requests	Funding Source:	PAIR/PAAT/PAVA/PADD/PATBI
Target Population:	People with disabilities who are using or seeking access to government benefits or services						
Target:	10 service requests						
Funding Source:	PAIR/PAAT/PAVA/PADD/PATBI						
4. PRIORITY/GOAL STATEMENT: Challenge discrimination on the part of places of public accommodation and ensure that people with disabilities enjoy equal access, particularly physical access, to places of public accommodation.							
Objective 7:	Review cases, provide technical assistance, and represent individuals who have been discriminated against or denied meaningful access to the benefits or services of places of public accommodation, using such individualized strategies as filing administrative complaints, lawsuits, and appeals.						
	<table border="1"> <tr> <td>Target Population:</td> <td>People with disabilities seeking access to places of public accommodation</td> </tr> <tr> <td>Target:</td> <td>10 service requests</td> </tr> <tr> <td>Funding Source:</td> <td>PAIR/CAP/PADD/PAAT/PATBI</td> </tr> </table>	Target Population:	People with disabilities seeking access to places of public accommodation	Target:	10 service requests	Funding Source:	PAIR/CAP/PADD/PAAT/PATBI
Target Population:	People with disabilities seeking access to places of public accommodation						
Target:	10 service requests						
Funding Source:	PAIR/CAP/PADD/PAAT/PATBI						

5. PRIORITY/GOAL STATEMENT: Ensure that Social Security Beneficiaries (SSB) are supported in their return to work efforts by providing accurate information or available work incentives and providing advocacy and legal representation when their rights are violated.		
Objective 8:	Investigate and review any complaint of improper or inadequate services provided to Social Security Beneficiaries (SSB) with disabilities by service providers, employers, or other entity involved in the SSB return to work effort.	
	Target Population:	SSB with disabilities with a complaint of improper or inadequate services by service providers, employers, or other entities
	Target:	10 service requests
	Funding Source:	PABSS
Objective 9:	Provide information and referral to Social Security Beneficiaries (SSB) with disabilities about work incentives and employment, and other SSA-related issues.	
	Target Population:	SSB with disabilities calling about work incentives and employment
	Target:	100% of all SSB callers
	Funding Source:	PABSS
Objective 10:	Provide consultation to and legal representation on behalf of Social Security Beneficiaries with disabilities to protect their rights.	
	Target Population:	SSB with disabilities desiring to work
	Target:	40 service requests
	Funding Source:	PABSS

EDUCATION

1. PRIORITY/GOAL STATEMENT: Disability Rights Montana will protect the rights of students with disabilities to access educational programs, services, activities, and benefits free from discrimination on the basis of disability and to receive a free and appropriate public education.

Objective 1:	Provide information and referral to students with TBI, DD/ID, ASD, ED, and other qualifying disabilities to obtain the supports and services they need to progress in their education.	
	Target Population:	All callers requesting information and referral
	Target:	100% of callers are provided information and referral
	Funding Source:	PADD/PAIMI/PAIR/PATBI/PAAT/PABSS/CAP/PAVA
Objective 2:	Provide advocacy and/or legal representation in cases that present Child Find and evaluation issues.	
	Target Population:	Students with disabilities
	Target:	21 service requests (4 PAIMI)
	Funding Source:	PADD/PAIMI/PAIR/PATBI/PAAT
Objective 3:	Provide advocacy and/or legal representation in cases that present restraint, seclusion, discipline, and school removal issues.	
	Target Population:	Students with disabilities
	Target:	6 Service Requests
	Funding Source:	PADD/PAIMI/PAIR/PATBI/PAAT/CAP/PAVA
Objective 4:	Provide advocacy and/or legal representation in transition planning for post-secondary education for failure to conduct and implement age appropriate transition plans.	
	Target Population:	Students with disabilities
	Target:	3 Service Requests
	Funding Source:	PADD/PAIR/PATBI/PAAT/CAP

Objective 5:	Provide advocacy and/or legal representation in cases that present other education, school-related issues of particular severity as determined by the Education Work Unit.	
	Target Population:	Students with disabilities
	Target:	2 Service Requests
	Funding Source:	PADD/PAIR/PATBI/PAAT/CAP/PABSS/PAVA
Objective 6:	Collaborate with community-based groups to improve educational and transition outcomes for students with disabilities of all ages.	
	Target Population:	Students with disabilities
	Target:	2 Projects
	Funding Source:	PADD/PAIMI/PAIR/PAAT/PATBI/CAP/PABSS/PAVA

OUTREACH/TRAINING

1. PRIORITY/GOAL STATEMENT: Disability Rights Montana will promote disability rights and awareness and keep the public informed of its activities.

Objective 1:	Provide and sponsor disability-rights-related awareness and training events throughout the state targeting minority and under-served persons with disabilities.	
	Target Population:	People with disabilities, minority groups, and the general public
	Target:	20 events (10 PAIMI) (2 in each region)
	Funding Source:	*Eight Core Grants
Objective 2:	Produce and disseminate an electronic newsletter and publications.	
	Target Population:	People with disabilities and the general public
	Target:	Quarterly Electronic newsletters
	Funding Source:	*Eight Core Grants
Objective 3:	Enhance DRM's interactive electronic presence (website) to leverage technology to distribute information and receive input.	
	Target Population:	People with disabilities and the general public
	Target:	Enhance website
	Funding Source:	*Eight Core Grants

POLICY

1. PRIORITY/GOAL STATEMENT: Disability Rights Montana will promote policies, statutes, and regulations in the State of Montana that are reflective and responsive of the equal, civil, and legal rights of people with disabilities.

Objective 1:	Monitor and respond to law, policy, and rule changes affecting the rights and opportunities of people with disabilities, and affecting the ability of DRM to serve people with disabilities between legislative sessions.	
	Target Population:	People with disabilities who are the subject of laws, policy, and rules of the State of Montana.
	Target:	Six projects
	Funding Source:	*Eight Core Grants; Unrestricted Funds
Objective 2:	Educate law and policy makers through oral and written communications in legislative and executive branch forums during the state legislative session and in legislative interim committee forums.	
	Target Population:	People with disabilities eligible for DRM services.
	Target:	Six projects
	Funding Source:	*Eight Core Grants; Unrestricted Funds
* Eight Core Grants = PADD, PAIMI, PAIR, CAP, PAAT, PATBI, PAVA, PABSS		

CIVIL RIGHTS

1. PRIORITY/GOAL STATEMENT: Disability Rights Montana will increase protection and recognition of the rights of people with disabilities through advocacy and/or legal representation.

Objective 1:	Provide advocacy and/or legal representation for people with disabilities in cases with the potential for establishing precedent, enforcing and clarifying constitutional and other rights. <i>This can only be used with prior approval of the Executive Director.</i>
---------------------	--

	Target Population:	All people with disabilities who are eligible for DRM services
	Funding Source:	*Eight Core Grants

* Eight Core Grants = PADD, PAIMI, PAIR, CAP, PAAT, PATBI, PAVA, PABSS

Client Information	
Client First Name	
Client Last Name	
Address	
City, State, Zip	
County	
Home Phone	
Alternate Phone/E-mail	
Date of Birth	Age
Ethnicity	
Is Client a Veteran? <input type="radio"/> Yes <input type="radio"/> No	
Location: <input type="radio"/> Rural <input type="radio"/> Urban Out of State: <input type="radio"/> Rural <input type="radio"/> Urban	
Facility	
Primary Disability	
Benefits: <input type="radio"/> Medicaid <input type="radio"/> Medicare <input type="radio"/> SSI <input type="radio"/> SSDI <input type="radio"/> Other_____	

Program Eligibility	
<input type="radio"/> None	<input type="radio"/> AT
<input type="radio"/> PAIMI	<input type="radio"/> PABSS
<input type="radio"/> PADD	<input type="radio"/> PAVA
<input type="radio"/> PAIR	<input type="radio"/> PATBI
<input type="radio"/> CAP	

Other Information
Intake Date:
Intake Specialist:
Date Staffed by Core Services:
Referred to workgroup:
Assigned to:

Registered Voter
<input type="radio"/> Yes <input type="radio"/> No
If no, do you want information sent?

Caller Information
Caller First Name
Caller Last Name
Address
City, State, Zip
Home Phone
Work Phone
Relationship to Client

Is there a Guardian?
<input type="radio"/> Yes <input type="radio"/> No
Guardian's Name
Guardian's Address
Guardian's Phone Number

Service Request Type
<input type="radio"/> Abuse/Neglect Allegation (PAIMI/PADD/PAIR/AT)
<input type="radio"/> Client Grievance (Administrative use)
<input type="radio"/> Document Review (Temporary - all programs)
<input type="radio"/> Litigation (All programs)
<input type="radio"/> Representation at Hearing (All programs)
<input type="radio"/> Representation at Meeting (All programs)
<input type="radio"/> Short Term Assistance (All programs)
<input type="radio"/> I&R (All Programs)
<input type="radio"/> Technical Assistance (All Programs)
<input type="radio"/> Transportation (All Programs)

Conflict Check
<input type="radio"/> Yes, a Conflict of Interest Check was completed on DAD by _____ (name of person completing Conflict of Interest Check)
<input type="radio"/> Yes, a conflict check was completed and no potential conflict was discovered
<input type="radio"/> Yes, a potential conflict was discovered Adverse Party Name: _____
<input type="radio"/> Yes, an attorney reviewed the identified potential conflict and approved the case for services. Date: _____ Attorney: _____
<input type="radio"/> No, a Conflict of Interest Check was not completed

Prior Service Requests / Calls
<input type="radio"/> Yes, the client's name is already in DAD
<input type="radio"/> Yes, there are prior service requests in DAD

Notes: _____

	<p align="center">ELIGIBILITY CRITERIA (Check only one)</p>	<p align="center">2018 Priorities and Objectives (Check only one)</p>
PAIMI	An individual with significant mental illness or emotional impairment, as determined by a mental health professional, (including persons who report matters which occurred while they were a person with MI) who is one of the following: <input type="checkbox"/> in the process of being admitted or being transported to a facility; <input type="checkbox"/> an inpatient or resident of a facility ; <input type="checkbox"/> involuntary confined in a detention facility for reasons other than serving a sentence resulting from conviction for a criminal offense; <input type="checkbox"/> has been discharged from a facility during the past 90 days; <input type="checkbox"/> in a federal facility <u>who requests representation</u> ; or <input type="checkbox"/> living in the community.	<p><u>Abuse & Neglect/Institutional Services</u> DRM will protect people with disabilities in community settings or facilities from abuse, neglect, seclusion/restraint, violations of civil rights and protect their rights to: live, work, learn, recreate in the least restrictive environment with privacy, dignity, and autonomy.</p> <p align="center"><input type="checkbox"/> 1 <input type="checkbox"/> 2 <input type="checkbox"/> 3 <input type="checkbox"/> 4 <input type="checkbox"/> 5</p>
PADD	Child - (birth through 9 years) An individual from birth to age 9 who has a substantial developmental delay or special congenital or acquired condition and if, without services and supports has a high probability of substantial functional limitations in 3 or more major life activities. . * (<input type="checkbox"/> self-care <input type="checkbox"/> receptive and expressive language <input type="checkbox"/> learning <input type="checkbox"/> mobility <input type="checkbox"/> self-direction <input type="checkbox"/> capacity for independent living <input type="checkbox"/> economic self-sufficiency).	<p align="center"><u>Core Services</u> DRM will provide information, referral, and short-term assistance and will develop and provide resource materials to people with disabilities, and assist people with disabilities to vote.</p> <p align="center"><input type="checkbox"/> 1 <input type="checkbox"/> 2 <input type="checkbox"/> 3 <input type="checkbox"/> 4</p>
	Adult - (9 years of age and over). An individual with a severe, chronic disability attributing to a mental or physical impairment or combination of mental and physical impairments, manifested before age 22, which is likely to continue indefinitely, resulting in substantial functional limitations in 3 or more major life activities* and reflects a person's need for lifelong or extended supports and services. * (<input type="checkbox"/> self-care <input type="checkbox"/> receptive and expressive language <input type="checkbox"/> learning <input type="checkbox"/> mobility <input type="checkbox"/> self-direction <input type="checkbox"/> capacity for independent living <input type="checkbox"/> economic self-sufficiency).	<p align="center"><u>Education</u> Disability Rights Montana will protect the rights of students with disabilities to access educational programs, services, activities, and benefits without discrimination on the basis of disability and to receive a free and appropriate public education.</p> <p align="center"><input type="checkbox"/> 1 <input type="checkbox"/> 2 <input type="checkbox"/> 3 <input type="checkbox"/> 4 <input type="checkbox"/> 5 <input type="checkbox"/> 6</p>
CAP	(a) Clients of programs funded under the Rehab Act. An individual seeking or receiving services under the Rehabilitation Act.	
	(b) Client has issue under Title I of the ADA. An individual with a disability who has an issue arising under Title I of the ADA may be eligible for all available CAP services if the problem is also connected to a service s/he is receiving or seeking from a program funded under the Act.	
	(c) Persons with a disability seeking ADA Title I information. An individual with a disability who is not a client or client applicant of programs funded under the Act is eligible to receive information and referral services from CAP regarding their rights and benefits available under the ACT and Title I of the ADA.	
	(d) Information regarding CAP. All other individuals are eligible to receive only information from CAP about CAP.	
PAIR	An individual with a disability that is not eligible for PADD, PAIMI, and CAP.	<p align="center"><input type="checkbox"/> 1 <input type="checkbox"/> 2 <input type="checkbox"/> 3 <input type="checkbox"/> 4 <input type="checkbox"/> 5 <input type="checkbox"/> 6 <input type="checkbox"/> 7 <input type="checkbox"/> 8 <input type="checkbox"/> 9 <input type="checkbox"/> 10</p>
PABSS	Social Security Beneficiary. An individual who is a Social Security beneficiary, SSI/SSDI, who is trying to secure or regain employment.	
AT	Access to AT services or devices. An individual with a disability who is or would be enabled by an assistive technology device or service to minimize deterioration or maintain a level of functioning or to achieve a greater level of functioning in any major life activity.	<p align="center"><u>Outreach/Training</u> DRM will promote disability rights and awareness and keep the public informed of its activities.</p> <p align="center"><input type="checkbox"/> 1 <input type="checkbox"/> 2 <input type="checkbox"/> 3</p>
PATBI	An individual with an acquired injury to the brain.	
PAVA	People with disabilities needing information or assistance in accessing the voting process. To include: registering to vote, casting a vote, and accessing polling places.	<p align="center"><u>Civil Rights</u> Disability Rights Montana will increase protection and recognition of the rights of people with disabilities through advocacy and/or legal representation.</p> <p align="center"><input type="checkbox"/> 1</p>
NONE	An individual who does not meet eligibility for CAP, PADD, PAIMI, PAIR, or PABSS. Caller receives Information and Referral only. Tied only to "Non-program eligible I&R" funding source.	

Client's Name _____

Caller's Name _____

Date: _____

S/R assigned to: _____

Policy
 DRM will promote policies, statutes, and regulations in the State of MT that are reflective and responsive of the equal, civil, and legal rights of pwd.

1 2

FY 2018 Disability Rights Montana Calendar

2017

October
Sunday, 1st National Disability Awareness Month
 FY 2018 begins

November
Friday, 10th National Child Mental Health Month
 Veteran's Day Observed/Office Closed
23-24th Thanksgiving/Office Closed

December
Friday, 21st Staff Meeting and Holiday Pot Luck
Mon.-Fri., 25-29th Holiday Break/Office Closed

2018

April
Wednesday, 11th Autism Awareness Month
 Quarterly/Litigation Reports Due
Friday, 13th BOD/AC Mailing
Friday, 27th PAIMI AC Meeting
Saturday, 28th BOD Meeting

May
Monday, 28th Mental Health Awareness Month
 Memorial Day/Office Closed

2018

January
Monday, 1st National Braille Literacy Month
 New Years Day/Office Closed
Wednesday, 10th Quarterly/Litigation Reports Due
Friday, 12th BOD/AC Mailing
Monday, 15th MLK, Jr. Day/Office Closed
Friday, 26th PAIMI AC Meeting
Saturday, 27th BOD Annual Meeting

February
Monday, 19th AMD/Low Vision Awareness Month
 Presidents' Day/Office Closed

March
Developmental Disabilities Month

July
Wednesday, 4th 4th of July Holiday/Office Closed
Wednesday, 11th Quarterly/Litigation Reports Due
Friday, 13th BOD/AC Mailing
Thursday, 26th PAIMI AC Meeting
Friday, 27th BOD Meeting

August
Tuesday, 7th Priorities Staff Meeting 10:00

September
Monday, 3rd National TBI Awareness Month
 Labor Day/Office Closed
Wednesday, 12th Quarterly/Litigation Reports Due
Friday, 14th BOD/AC Mailing
Thursday, 27th PAIMI AC Meeting - Priorities
Friday, 28th BOD Meeting - Priorities
Sunday, 30th End of Fiscal Year - Cases Closed

* weekly staff meetings every Tuesday morning/8:30 - 9:30 a.m.