

PRIORITY SERVICE PLAN FY 2023

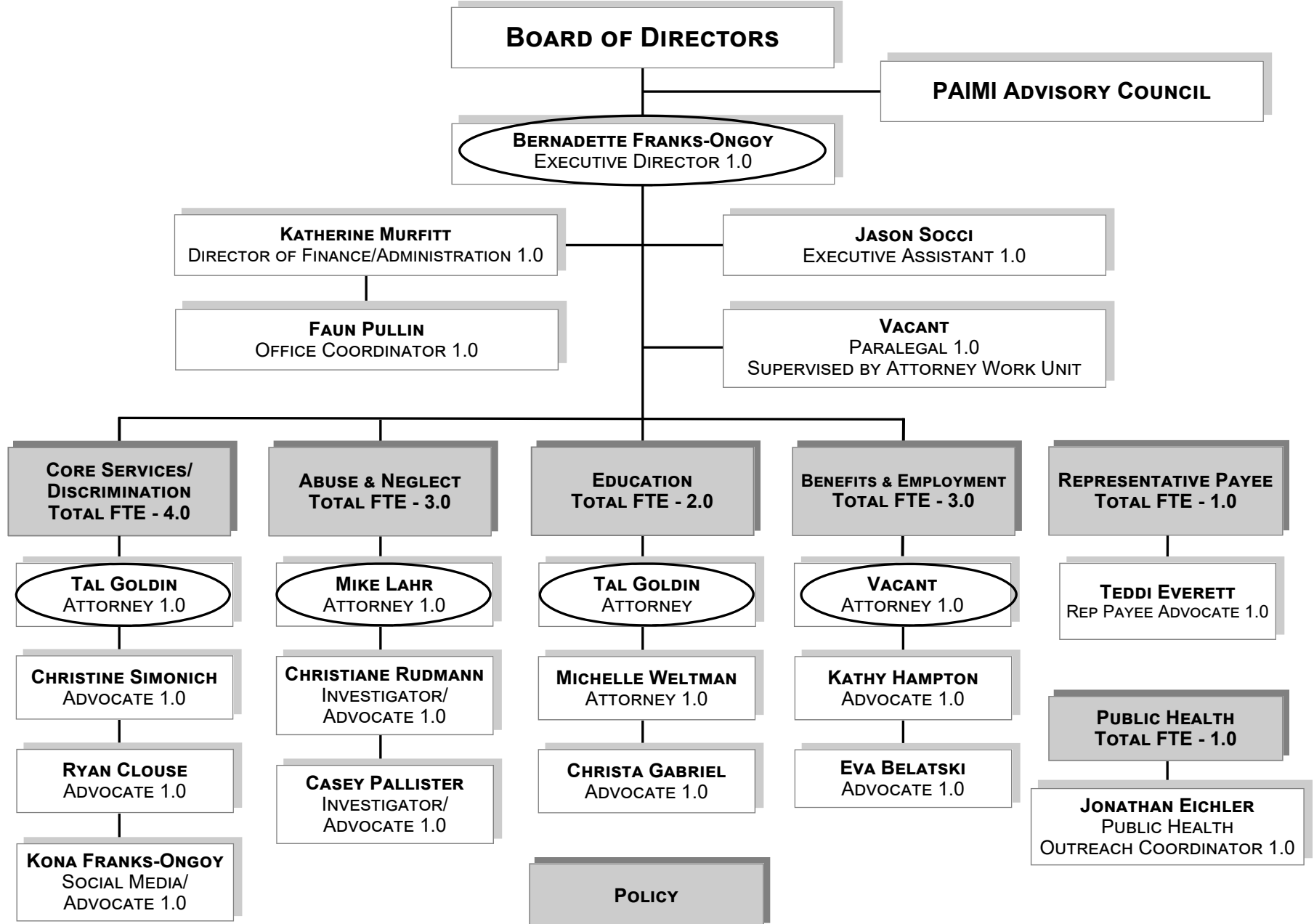
October 1, 2022 - September 30, 2023

DISABILITY RIGHTS MONTANA PROTECTS AND
ADVOCATES FOR THE HUMAN, LEGAL, AND CIVIL
RIGHTS OF MONTANANS WITH DISABILITIES WHILE
ADVANCING DIGNITY, EQUALITY, AND SELF-
DETERMINATION.

TABLE OF CONTENTS

Organizational Chart	1
Work Group Hours Allocation	2
Priority Areas.....	3
Abuse and Neglect.....	6
Benefits and Employment	8
Civil Rights	11
Core Services.....	12
Education.....	13
Outreach/Training.....	15
Policy	16
Representative Payee	17
Service Request Form.....	18
DRM Staff/Board of Directors Calendar	19

DISABILITY RIGHTS MONTANA ORGANIZATIONAL/SUPERVISORY CHART



*  = Supervising Attorney

PROJECTED - WORK GROUP HOURS ALLOCATION (FY2023)

CORE SERVICES											
	PAAT	CAP	PAIR	PADD	PAIMI	PABSS	PATBI	PAVA	PAPH	Total Hrs.	FTE
TG	68	137	126	218	132	156	52	-	-	889	0.43
CS	42	-	624	562	686	21	42	104	-	2,080	1.00
RC	42	-	707	374	395	42	104	416	-	2,080	1.00
KF	52	52	156	156	156	104	52	260	-	988	0.48
Total	203	189	1,613	1,310	1,370	322	250	780	-	6,037	2.90

ABUSE & NEGLECT									
	PAAT	PAIR	PADD	PAIMI	PABSS	PATBI	PAVA	Total Hrs.	FTE
ML	208	104	416	832	104	104	104	1,872	0.9
CR	-	104	1,456	416	-	104	-	2,080	1.0
CP	104	104	458	1,206	62	42	104	2,080	1.0
Total	312	312	2,330	2,454	166	250	208	6,032	2.9

EDUCATION										
	PAAT	CAP	PAIR	PADD	PAIMI	PABSS	PATBI	PAVA	Total Hrs.	FTE
TG	104	175	82	158	140	156	32	208	1,055	0.5
MW	208	62	208	874	416	104	104	104	2,080	1.0
CG	208	312	208	416	312	312	104	208	2,080	1.0
Total	520	549	498	1,448	868	572	240	520	5,215	2.0

BENEFITS & EMPLOYMENT										
	PAAT	CAP	PAIR	PADD	PAIMI	PABSS	PATBI	PAVA	Total Hrs.	FTE
ML	0	208	0	0	0	0	0	0	208	0.1
KH	104	1,310	104	208	208	-	42	104	2,080	1.0
EB	42	42	187	104	104	1,352	42	208	2,080	1.0
Total	146	1,560	291	312	312	1,352	83	312	4,368	2.1

POLICY						
	PAIR	PADD	PAIMI	PATBI	Total Hrs.	FTE
TG	36	40	40	20	136	0.07
BFO	52	65	65	26	208	0.10
Total	88	105	105	46	344	0.17

REPRESENTATIVE PAYEE			
	PABRP	Total Hrs.	FTE
TE	2,080	2,080	1.0
Total	2,080	2,080	1.0

PUBLIC HEALTH			
	PAPH	Total Hrs.	FTE
JE	2,080	2,080	1.0
Total	2,080	2,080	1.0

LEGAL PROGRAM SUPPORT										
	PAAT	CAP	PAIR	PADD	PAIMI	PABSS	PATBI	PAVA	Total Hrs.	FTE
Vacant	31	47	78	593	577	109	47	78	1,560	0.8
Total	31	47	78	593	577	109	47	78	1,560	0.8

OUTREACH & SOCIAL MEDIA												
	PAAT	CAP	PAIR	PADD	PAIMI	PABSS	PATBI	PAVA	PAPH	PABRP	Total Hrs.	FTE
KF	52	52	156	156	156	104	52	260	104	-	1,092	0.5
Total	52	52	156	156	156	104	52	260	104	-	1,092	0.5

ADMINISTRATION												
	PAAT	CAP	PAIR	PADD	PAIMI	PABSS	PATBI	PAVA	PAPH	PABRP	Total Hrs.	FTE
BFO	94	153	168	436	361	169	30	156	156	149	1,872	0.9
KM	110	179	258	587	500	198	66	183	-	-	2,080	1.0
FP	110	179	258	587	500	198	66	183	-	-	2,080	1.0
JS	110	179	258	587	500	198	66	183	-	-	2,080	1.0
Total	423	691	941	2,195	1,860	765	229	704	156	149	8,112	3.9

Grant	Total FTE
PAAT	0.81
CAP	1.48
PAIR	1.91
PADD	4.06
PAIMI	3.70
PABSS	1.63
PATBI	0.58
PAVA	1.38
PAPH	1.13
PABRP	1.07
TOTAL FTE	17.75

Grant	% FTE
PAAT	4.57%
CAP	8.36%
PAIR	10.77%
PADD	22.88%
PAIMI	20.86%
PABSS	9.18%
PATBI	3.24%
PAVA	7.75%
PAPH	6.34%
PABRP	6.04%
TOTAL	100%

Grant	Total Hrs.
PAAT	1,687
CAP	3,088
PAIR	3,977
PADD	8,448
PAIMI	7,702
PABSS	3,391
PATBI	1,196
PAVA	2,862
PAPH	2,340
PABRP	2,229
TOTAL HRS	36,920

Revised
09.21.22

FY 2023 Priorities and Objectives approved by the Board of Directors on
September 30, 2022

Disability Rights Montana has established the following priorities to protect and advocate for the civil and human rights for people with disabilities.

Following is a description of the priority areas, the rationale, and the work to be accomplished:

CORE SERVICES AND DISCRIMINATION

The Core Services and Discrimination (CS&D) Unit provides information and referral and technical assistance to all contacts to assist individuals with disabilities and entities serving the disability community in understanding and accessing social services, asserting and enforcing their civil rights, engaging in self-advocacy, and increasing community knowledge and understanding of these services, programs, and legal rights. When appropriate to the needs of the individual, the CS&D Unit provides short-term assistance to assist individuals with disabilities, as well as technical assistance to providers and other allies.

In its discrimination function, Disability Rights Montana will focus on assuring people with disabilities have access to the full range of public and private services and can fully participate in public life free from discrimination.

ABUSE AND NEGLECT

Disability Rights Montana will work to protect from abuse and neglect all adults and children who are living in congregate living facilities such as residential care facilities, mental health facilities, and developmental disability facilities. Disability Rights Montana will review all reports of serious incidents, including abuse, neglect, death, seclusion, restraint (physical, mechanical, and chemical), and rights violations. Disability Rights Montana will assure proper investigations to identify system-wide failures and pursue legal strategies that target systemic change to assure safe, humane, and appropriate services and the least restrictive living environments.

BENEFITS AND EMPLOYMENT

People with disabilities who want to work will have access to rehabilitation services and benefits. Disability Rights Montana will represent people who experience difficulty accessing vocational rehabilitation services, independent living services, and other services funded under the Rehabilitation Act.

People with disabilities often experience difficulty in their return-to-work efforts. Disability Rights Montana will ensure that Social Security Beneficiaries (SSB) are supported in their return-to-work efforts by providing accurate information or available work incentives and providing advocacy and legal representation when their rights are violated.

EDUCATION

The Education Unit believes full participation in community life, meaningful choice, and self-determination by people with disabilities begins with a high-quality K-12 education which meets each individual's needs. The best opportunity for people to acquire the skills they need to succeed in lifelong learning, employment, and independent living is during the critical development period of primary and secondary education.

In the 2023 Fiscal Year, we will advance equity, dignity, and self-determination for people with disabilities through the following Priorities and Objectives as measured by the Key Results detailed below.

REPRESENTATIVE PAYEE

In March 2018, legislation was passed by the U.S. Senate to increase oversight and protection for some of our nation's most vulnerable citizens. The bill, called the Strengthening Protections for Social Security Beneficiaries Act (H.R. 4547), increased independent oversight of the Social Security Administration's Representative Payee Program.

Disability Rights Montana will conduct organizational and individual representative payee reviews as assigned by the Social Security Administration.

OUTREACH AND TRAINING

In order to fully participate, exercise choice and self-determination, people with disabilities and the general public can benefit from disability rights and awareness training. Disability Rights Montana will sponsor disability rights and awareness training throughout the state with an emphasis on minority, under-served communities. Disability Rights Montana will produce and distribute an electronic newsletter quarterly and enhance its electronic presence.

POLICY

Disability Rights Montana pursues policy work to preserve the gains made through individual advocacy and to address and correct system issues. Disability Rights

Montana will monitor and participate in law, policy, and rule changes affecting the rights and opportunities of people with disabilities as well as the ability of DRM to serve people with disabilities, educate law and policy makers through oral and written communications in legislative and executive branch forums, and participate in discussions, committees, and task forces with the executive, policy makers, and stakeholders.

ABUSE AND NEGLECT		
1. PRIORITY/GOAL STATEMENT: Disability Rights Montana will protect people with disabilities in facilities from abuse, neglect, seclusion/restraint, violations of civil rights and protect their right to receive appropriate services with privacy, dignity, and autonomy.		
Objective 1:	Identify, monitor, and investigate select instances of abuse, neglect, seclusion, restraint (+chemical restraint), and egregious violation of civil rights, affecting people with disabilities receiving services in public and private institutions and facilities and pursue legal remedies. Pursue/address systemic issues to effect change in practice, policy, rule or law.	
	Target Population:	PADD, PAIMI, PAIR, or PATBI-eligible youth and adults living in or receiving treatment from public and private institutions and facilities
	Target:	Review 100% of allegations (5 PAIMI SRs and 1 project)
	Funding:	PADD / PAIMI / PAIR / PATBI
Objective 2:	Identify, monitor, and/or investigate select instances of abuse/neglect, seclusion, restraint (+chemical restraint), and egregious violation of civil rights at the Intensive Behavior Center (IBC) and pursue legal remedies. Pursue/address systemic issues to effect change in practice, policy, rule or law.	
	Target Population:	All residents at IBC
	Target:	Review 100% of allegations
	Funding:	PADD

2. PRIORITY/GOAL STATEMENT: Disability Rights Montana will protect people with disabilities living in community settings from abuse and neglect, violation of civil rights, and protect their right to receive appropriate services in the least restrictive environment.

Objective 3:	Monitor, investigate, and bring legal action when appropriate against community service providers to protect people living in the community from abuse, neglect and rights violations and advocate for the provision of community services.	
	Target Population:	People with disabilities living in community services
	Target:	2 service requests (1 PAIMI)
	Funding:	PADD / PAIMI / PAIR / PATBI

BENEFITS AND EMPLOYMENT		
1. PRIORITY/GOAL STATEMENT: Ensure that people with disabilities receive appropriate services from Montana Vocational Rehabilitation, Independent Living Centers, and other programs funded by the Rehabilitation Act.		
Objective 1:	Represent qualified individuals in accordance with the Client Assistance Program (CAP) program requirements to include applicants and clients of the State Vocational Rehabilitation Program.	
	Target Population:	People with disabilities receiving or seeking services from Vocational Rehabilitation and other programs funded by the Rehabilitation Act
	Target:	20 service requests
	Funding:	CAP / PABSS
Objective 2:	Address institutional concerns and issues with the delivery of services by the State Vocational Rehabilitation Program through periodic communication with the Chief of Field Services for Montana Vocational Rehabilitation and participation on the State Vocational Rehabilitation Program.	
	Target Population:	People with disabilities receiving or seeking services from Vocational Rehabilitation and other programs funded by the Rehabilitation Act
	Target:	1 project
	Funding:	CAP / PABSS

2. PRIORITY/GOAL STATEMENT: Ensure that Social Security Disability Beneficiaries are supported in their efforts to maintain employment or return to the workforce by providing information on employment supports, employee rights, and available potential Social Security work incentives, as well as providing advocacy and legal representation when they face discrimination and/or a violation of their rights.		
Objective 3:	Investigate and review any complaint of improper or inadequate services provided to Social Security Disability Beneficiaries by employers, service providers, or other entities involved in their effort to maintain employment or return to work.	
	Target Population:	Social Security Disability Beneficiaries who have a complaint of improper or inadequate services by employers, service providers, or other entities
	Target:	5 service requests
	Funding:	CAP / PABSS
Objective 4:	Provide information and referral to Social Security Disability Beneficiaries about employment supports, employee rights, potential Social Security work incentives, and other services needed to maintain employment or return to work.	
	Target Population:	Social Security Disability Beneficiaries calling about Social Security work incentives, employee rights, employment supports, or other employment related needs
	Target:	All Social Security Disability beneficiary callers
	Funding:	CAP / PABSS
Objective 5:	Provide advocacy and/or legal representation when Social Security Disability Beneficiaries face discrimination and/or a violation of their rights when it becomes a barrier to maintaining their employment or returning to work.	

	Target Population:	Social Security Disability Beneficiaries with a complaint of discrimination and/or violation of their rights by employers, service providers, or other entities
	Target:	2 service requests
	Funding:	CAP / PABSS
3. PRIORITY/GOAL STATEMENT: Ensure that Social Security Disability Beneficiaries and Vocational Rehabilitation eligible clients have access to and are knowledgeable about PABSS and CAP services.		
Objective 6:	Participate in training and outreach efforts to address services to underserved populations, including Native Americans and students who are youth in transition ages 14-24.	
	Target Population:	People with disabilities who are seeking information about Social Security Disability Benefits and students/individuals who are seeking information about our PABSS and CAP services
	Target:	2 projects
	Funding:	CAP / PABSS

CIVIL RIGHTS		
1. PRIORITY/GOAL STATEMENT: Disability Rights Montana will increase protection and recognition of the rights of people with disabilities through advocacy and/or legal representation.		
Objective 1:	Provide advocacy and/or legal representation for people with disabilities in cases with the potential for establishing precedent, enforcing and clarifying constitutional and other rights. <i>This can only be used with prior approval of the Executive Director.</i>	
	Target Population:	All people with disabilities who are eligible for DRM services
	Target:	1 PAIMI
	Funding:	*Eight Core Grants
* Eight Core Grants = CAP, PAAT, PABSS, PADD, PAIMI, PAIR, PATBI, PAVA		

CORE SERVICES		
1. PRIORITY/GOAL STATEMENT: Disability Rights Montana will provide information, referral, and short-term assistance. Provide information and supports to support people with disabilities can access and vote privately and independently.		
Objective 1:	Provide reliable, timely information and referral services to all callers.	
	Target Population:	People calling Disability Rights Montana for information and referral
	Target:	100% of all callers (200 PAIMI)
	Funding:	*Eight Core Grants
Objective 2:	Provide short-term assistance for non-priority issues to eligible persons with disabilities.	
	Target Population:	People with disabilities requesting assistance with non-priority issues
	Target:	35 service requests (20 PAIMI)
	Funding:	PAAT/ PADD / PAIMI / PAIR / PATBI
* Eight Core Grants = PADD, PAIMI, PAIR, CAP, PAAT, PATBI, PABSS, PAVA		
Objective 3:	Provide information and supports so people with disabilities can access and vote privately and independently.	
	Target Population:	People with disabilities
	Target:	3 Projects
	Funding:	PAVA

EDUCATION		
1. PRIORITY/GOAL STATEMENT: School age children and youth with disabilities are provided a high-quality elementary and secondary education through age 21 that meets their individual needs alongside their typically developing peers.		
Objective 1:	Provide technical assistance, advocacy, or legal representation on individual or systemic issues that prioritize and protect access to a free and appropriate public education for all students with disabilities in Montana.	
	Target Population:	Students with disabilities
	Target:	2 service requests (1 PAIMI) and 3 projects
	Funding:	CAP / PAAT / PABSS / PADD / PAIMI / PAIR / PAPH
2. PRIORITY/GOAL STATEMENT: School age children and youth are safe and fully integrated in school.		
Objective 2:	Engage stakeholders through information, community organizing and advocacy to ensure students with disabilities in Montana are safe from the use of inappropriate disciplinary practices, seclusion, and restraint, and are educated in the most integrated setting.	
	Target Population:	Students with disabilities
	Target:	2 projects (1 PAIMI)
	Funding:	CAP / PAAT / PABSS / PADD / PAIMI / PAIR / PAPH

3. PRIORITY/GOAL STATEMENT: School age children and youth with disabilities, their service providers, and allies know and can effectively assert students' rights under IDEA, Section 504, and the ADA throughout their eligibility for IDEA services (Part B and Part C).

Objective 3:	Ensure the rights of students with disabilities are protected to the maximum extent of the law by providing training opportunities, information, and resources to parents, advocates, educators, allies, and policy makers about the legal and civil rights of students with disabilities.	
	Target Population:	Students with disabilities
	Target:	100% of requestors for I&R and technical assistance (20 PAIMI) and 4 projects
	Funding:	CAP / PAAT / PABSS / PADD / PAIMI / PAIR / PAPH

4. PRIORITY/GOAL STATEMENT: Maximize our impact on parents and students by improving the quality of service and content they receive from the Education Unit.

Objective 4:	Provide quality and efficient services by responding to callers with accurate, timely and effective information that will assist parents and students with understanding their rights and how to navigate special education related laws, regulations, and procedures.	
	Target Population:	Students with disabilities
	Target:	3 projects (1 PAIMI)
	Funding:	CAP / PAAT / PABSS / PADD / PAIMI / PAIR / PAPH / PAVA

OUTREACH/TRAINING		
1. PRIORITY/GOAL STATEMENT: Disability Rights Montana will promote disability rights and awareness and keep the public informed of its activities.		
Objective 1:	Provide and sponsor disability-rights-related awareness and training events throughout the state to include people with disabilities, minority, under-served persons with disabilities, providers, and the general public.	
	Target Population:	People with disabilities, minority groups, first responders, and the general public
	Target:	5 events (2 PAIMI)
	Funding:	*Eight Core Grants, PAPH
Objective 2:	Produce and disseminate an electronic newsletter and publications.	
	Target Population:	People with disabilities and the general public
	Target:	Quarterly Electronic newsletters and other publications
	Funding:	*Eight Core Grants, PAPH
Objective 3:	Enhance DRM's interactive electronic presence (website) to leverage technology to distribute information and receive input.	
	Target Population:	People with disabilities and the general public
	Target:	Enhance website and participate in social media
	Funding:	*Eight Core Grants, PAPH
* Eight Core Grants = CAP, PAAT, PABSS, PADD, PAIMI, PAIR, PATBI, PAVA		

POLICY		
1. PRIORITY/GOAL STATEMENT: Disability Rights Montana will promote policies, statutes, and regulations in the State of Montana that are reflective and responsive of the equal, civil, and legal rights of people with disabilities.		
Objective 1:	Monitor and respond to state and federal legislative proposals affecting the rights, safety and opportunities of people with disabilities.	
	Target Population:	People with disabilities who are impacted by state legislative proposals
	Target:	7 projects (1 PAIMI)
	Funding:	*Eight Core Grants; Unrestricted Funds
Objective 2:	Monitor and respond to proposed administrative rule changes affecting the rights, safety and opportunities of people with disabilities.	
	Target Population:	People with disabilities who are impacted by state administrative rules
	Target:	3 projects (1 PAIMI)
	Funding:	*Eight Core Grants; Unrestricted Funds
Objective 3:	Identify and participate in discussions with the executive, stakeholders, and other policy makers regarding the implementation of initiatives, policies and procedures, etc. that impact people with disabilities.	
	Target Population:	People with disabilities who are impacted by the state executives' initiatives, policies and procedures
	Target:	2 projects
	Funding:	*Eight Core Grants; Unrestricted Funds
* Eight Core Grants = CAP, PAAT, PABSS, PADD, PAIMI, PAIR, PATBI, PAVA		

REPRESENTATIVE PAYEE		
1. PRIORITY/GOAL STATEMENT: Strengthens oversight of representative payees by performing onsite reviews of payee performance, on behalf of the Social Security Administration (SSA).		
Objective 1:	Target Population:	Organizational and individual representative payees as identified by the SSA.
	Target:	All SSA required reviews
	Funding:	PABRP
Objective 2:	Target Population:	Organizational and individual representative payees identified and nominated by DRM for review
	Target:	1 representative payee identified by DRM
	Funding:	PABRP

Client Information	
Client First Name:	
Client Last Name:	
Address:	
City, State, Zip:	
County:	
Home/Cell Phone:	
E-mail:	
Date of Birth:	Age:
Ethnicity:	
Location: <input type="radio"/> Rural <input type="radio"/> Urban	Out of State: <input type="radio"/> Rural <input type="radio"/> Urban
Facility:	
Primary Disability:	
Benefits: <input type="radio"/> Medicaid <input type="radio"/> Medicare <input type="radio"/> SSI <input type="radio"/> SSDI <input type="radio"/> Other: _____	
Is the client's name already in DAD?	<input type="radio"/> Yes <input type="radio"/> No
Are there prior service requests in DAD?	<input type="radio"/> Yes <input type="radio"/> No
Is the client a veteran?	<input type="radio"/> Yes <input type="radio"/> No
Is the client a registered voter? If no, do they want information sent?	<input type="radio"/> Yes <input type="radio"/> No
Would the client like to sign up for the newsletter?	<input type="radio"/> Yes <input type="radio"/> No
Would the client like information regarding the COVID vaccination?	<input type="radio"/> Yes <input type="radio"/> No

Program Eligibility	
<input type="radio"/> None	<input type="radio"/> PAAT
<input type="radio"/> PAIMI	<input type="radio"/> PABSS
<input type="radio"/> PADD	<input type="radio"/> PAVA
<input type="radio"/> PAIR	<input type="radio"/> PATBI
<input type="radio"/> CAP	

Other Information
Intake Date:
Intake Specialist:
Date Staffed by Core Services:
Referred to workgroup:
Assigned to:

Caller Information
Caller First Name:
Caller Last Name:
Address:
City, State, Zip:
Home/Cell/Work Phone:
E-mail:
Relationship to Client:

Is there a Guardian?
<input type="radio"/> Yes <input type="radio"/> No
Guardian's Name:
Guardian's Address:
Guardian's Phone Number:

Service Request Type
<input type="radio"/> Individual Advocacy Services (All Programs)
<input type="radio"/> Individual Investigation/Monitoring (All Programs)
<input type="radio"/> I&R (All Programs)
<input type="radio"/> Technical Assistance (PAAT, PADD, PAIMI, PATBI, PAVA)

Conflict Check
<input type="radio"/> Yes, a Conflict of Interest Check was completed on DAD by _____ (name of person completing Conflict of Interest Check) <input type="radio"/> Yes, a conflict check was completed and no potential conflict was discovered. <input type="radio"/> Yes, a potential conflict was discovered. Adverse Party Name: _____ <input type="radio"/> Yes, an attorney reviewed the identified potential conflict and approved the case for services. Date: _____ Attorney: _____ <input type="radio"/> No, a Conflict of Interest Check was not completed.

Notes:

	Eligibility Criteria (Check only one)	2023 Objectives (Check only one)
PAIMI	An individual with significant mental illness or emotional impairment, as determined by a mental health professional, (including persons who report matters which occurred while they were a person with MI) who is one of the following: admitted to or being transported to a facility; involuntary confined in a detention facility for reasons other than serving a sentence resulting from conviction for a criminal offense; individual missing or deceased; inpatient or resident of a facility; or living in the community.	<u>Abuse & Neglect</u> <input type="checkbox"/> 1 <input type="checkbox"/> 2 <input type="checkbox"/> 3 <u>Benefits and Employment</u> <input type="checkbox"/> 1 <input type="checkbox"/> 2 <input type="checkbox"/> 3 <input type="checkbox"/> 4 <input type="checkbox"/> 5 <input type="checkbox"/> 6 <u>Civil Rights</u> <input type="checkbox"/> 1 <u>Core Services</u> <input type="checkbox"/> 1 <input type="checkbox"/> 2 <input type="checkbox"/> 3 <u>Education</u> <input type="checkbox"/> 1 <input type="checkbox"/> 2 <input type="checkbox"/> 3 <input type="checkbox"/> 4 <u>Outreach/Training</u> <input type="checkbox"/> 1 <input type="checkbox"/> 2 <input type="checkbox"/> 3 <u>Policy</u> <input type="checkbox"/> 1 <input type="checkbox"/> 2 <input type="checkbox"/> 3
PADD	Child - (birth through 9 years). An individual from birth to age 9 who has a substantial developmental delay or special congenital or acquired condition and if, without services and supports has a high probability of substantial functional limitations in 3 or more major life activities. * (self-care; receptive and expressive language; learning; mobility; self-direction; capacity for independent living; economic self-sufficiency). Adult - (9 years of age and over). An individual with a severe, chronic disability attributing to a mental or physical impairment or combination of mental and physical impairments, manifested before age 22, which is likely to continue indefinitely, resulting in substantial functional limitations in 3 or more major life activities* and reflects a person's need for lifelong or extended supports and services. * (self-care; receptive and expressive language; learning; mobility; self-direction; capacity for independent living; economic self-sufficiency).	
CAP	(a) Clients of programs funded under the Rehab Act. An individual seeking or receiving services under the Rehabilitation Act. (b) Client has issue under Title I of the ADA. An individual with a disability who has an issue arising under Title I of the ADA may be eligible for all available CAP services if the problem is also connected to a service s/he is receiving or seeking from a program funded under the Act. (c) Persons with a disability seeking ADA Title I information. An individual with a disability who is not a client or client applicant of programs funded under the Act is eligible to receive information and referral services from CAP regarding their rights and benefits available under the ACT and Title I of the ADA. (d) Information regarding CAP. All other individuals are eligible to receive only information from CAP about CAP.	
PAIR	An individual with a disability that is not eligible for PADD, PAIMI, and CAP.	
PABSS	Social Security Beneficiary. An individual who is a Social Security beneficiary, SSI/SSDI, who is trying to secure or regain employment.	
PAAT	Access to AT services or devices. An individual with a disability who is or would be enabled by an assistive technology device or service to minimize deterioration or maintain a level of functioning or to achieve a greater level of functioning in any major life activity.	
PATBI	An individual with an <u>acquired</u> injury to the brain.	
PAVA	People with disabilities needing information or assistance in accessing the voting process.	
NONE	An individual who does not meet eligibility for CAP, PADD, PAIMI, PAIR, or PABSS. Caller receives Information and Referral only. Tied only to "non-program eligible I&R" funding source.	

FY 2023 Disability Rights Montana Calendar

2022

October

Tuesday, 1st
Monday, 14th

FY 2023 Begins
Columbus Day/Office Open

November

Friday, 11th
Friday, 18th
Thursday, 24th
Friday, 25th

Veterans Day/Office Closed
Monthly Board Meeting
Thanksgiving /Office Closed
Day after Thanksgiving/Office Closed

December

Friday, 9th
Wed-Tues, 26th-31st

Monthly Board Meeting
Christmas Holiday Break/Office Closed

2023

January

Monday, 2nd Day after New Year's Day/Office Closed
Monday, 16th Martin Luther King Jr. Day/Office Closed
Friday, 27th PAIMI AC Meeting
Saturday, 28th Quarterly Board Meeting

February

Friday, 10th Monthly Board Meeting
Monday, 20th Presidents' Day/Office Closed

March

Friday, 10th Monthly Board Meeting

April

Friday, 28th PAIMI AC Meeting
Saturday, 29th Quarterly Board Meeting

May

Friday, 12th Monthly Board Meeting
Monday, 29th Memorial Day/Office Closed

June

Friday, 9th Monthly Board Meeting

July

Friday, 4th Independence Day/Office Closed
Friday, 28th PAIMI AC Meeting
Saturday, 29th Quarterly Board Meeting

August

Friday, 11th Monthly Board Meeting

September

Monday, 4th Labor Day/Office Closed
Thursday, 28th PAIMI AC Meeting
Friday, 29th Quarterly Board Meeting